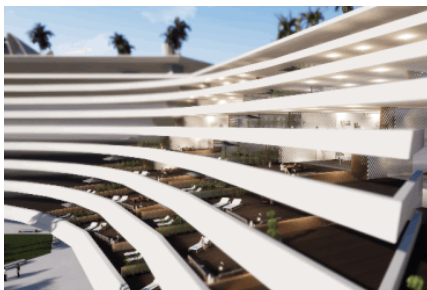




## DISTRICT / PRICING OVERVIEW



### RING LEVELS - Interior & Balcony Apartments

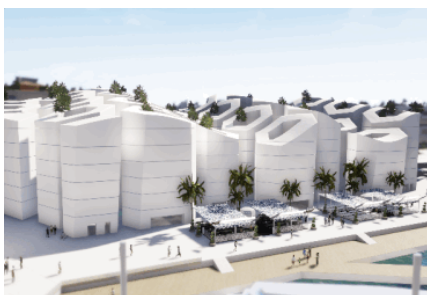
#### UNITS STARTING FROM:

**Interior Studio: \$ 19,780 USD** (larger units up to 5 BR available)

215 sqft (20sqm) @ \$92 USD/sqft (\$989 USD/sqm)

**Smallest Balcony Apartment: \$ 169,200 USD** (larger units up to 5 BR available)

430 sqft (40sqm) @ \$334 USD/sqft (\$3,600 USD/sqm)



### CORAL TOWERS - Apartments & Duplex Penthouses

#### UNITS STARTING FROM:

**Studio Apartment: \$ 85,500 USD** (larger units up to 5 BR available)

480 sqft (45sqm) @ \$176 USD/sqft (\$1,900 USD/sqm)

**Duplex Garden Penthouse: \$ 851,200 USD** (larger units up available)

2,866 sqft (266sqm) @ \$297 USD/sqft (\$3,200 USD/sqm)



### HEXA BUILDINGS - Apartments & Penthouses

#### UNITS STARTING FROM:

**Apartment: \$ 114,000 USD** (larger units up to 5 BR available)

613 sqft (57sqm) @ \$186 USD/sqft (\$2,000 USD/sqm)

**Balcony Penthouse: \$ 985,000 USD** (larger units available)

living: 1,937 sqft (180sqm) // balcony: 2,798 sqft (260sqm)



### WAVES - Apartments & Garden Penthouses

#### UNITS STARTING FROM:

**Apartment: \$ 232,000 USD** (larger units up to 5 BR available)

862 sqft (80sqm) @ \$269 USD/sqft (\$2,900 USD/sqm)

**Duplex Garden Penthouse: \$ 1,050,000 USD** (larger units up available)

1,884 sqft (175sqm) // garden/balcony: 1,076 sqft (100sqm)



### GREEN TOWERS - Apartments & Pool Penthouses

#### UNITS STARTING FROM:

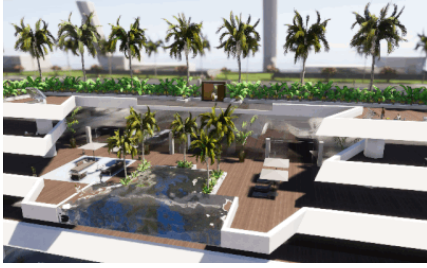
**Apartment: \$ 318,450 USD** (larger units up to 5 BR available)

926 sqft (86sqm) @ \$306 USD/sqft (\$3,300 USD/sqm)

**Duplex Garden Pool Penthouse: \$ 9,720,000 USD**

living: 12,916 sqft (1,200sqm) // garden/balcony: 19,375 sqft (1,800sqm)

# DISTRICT / PRICING OVERVIEW



## POOL APARTMENTS & GARDEN PENTHOUSES

**Private Pool Duplex Apartment: \$ 7,500,000 USD**

living: 9,687 sqft (900sqm) // balcony: 10,764 sqft (1,000sqm)

**Garden Triplex Penthouse: \$ 15,500,000 USD**

living: 16,146 sqft (1,500sqm) // balcony: 21,528 sqft (2,000sqm)



## GARDEN VILLAS - Medium & Large Garden Villas

**Medium Garden Villa (sea view): \$ 29,000,000 USD**

living: 8,611 sqft (800sqm) // garden plot: 13,455 sqft (1,250sqm)

**Large Garden Villa (sea view): \$ 54,000,000 USD**

living: 20,451 sqft (1,900sqm) // garden plot: 21,528 sqft (2,000sqm)



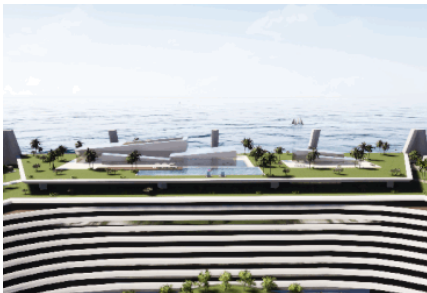
## THE CORNER ESTATES

ONLY 4 UNITS AVAILABLE:

**\$ 126,000,000 USD**

living: 53,820 sqft (5,000sqm) // plot: 109,469 sqft (10,170sqm)

**+ PRIVATE GARDEN PLATFORM ABOVE GARDEN DECK (10th floor)**  
**+ SEA VIEW**



## THE SIDELINE ESTATES

ONLY 2 UNITS AVAILABLE:

**\$ 464,000,000 USD**

living: 102,257 sqft (9,500sqm) // plot: 192,997 sqft (17,930sqm)

**+ PRIVATE GARDEN PLATFORM ABOVE GARDEN DECK (10th floor)**  
**+ PRIVATE OCEAN TERRACE**  
**+ SEA VIEW**



## THE SIGNATURE ESTATES

ONLY 2 UNITS AVAILABLE:

**\$ 1,150,000,000 USD**

living: 215,278 sqft (20,000sqm) // plot: 592,015 sqft (55,000sqm)

**+ PRIVATE GARDEN PLATFORM ABOVE GARDEN DECK (11th floor)**  
**+ PRIVATE OCEAN TERRACE**  
**+ PRIVATE UNDERWATER SUITE**  
**+ PRIVATE SUBMARINE**  
**+ SEA VIEW**